



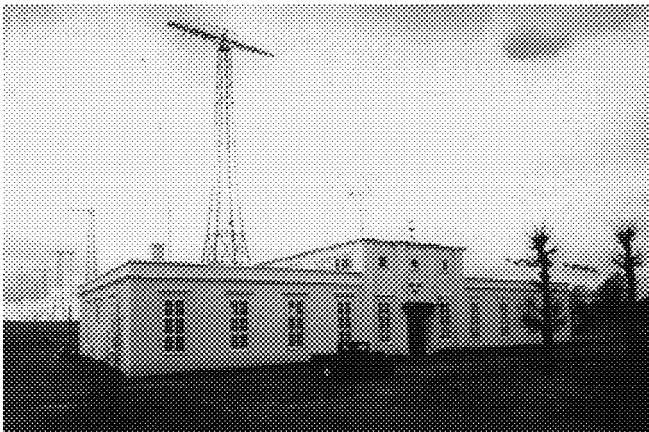
Across the pond on 18,000 meters!

OSCILLATOR

DELAWARE VALLEY HISTORIC RADIO

*The Official Newsletter of the DVHRC
1998*

Vol. 6, No. 6, June



The station building at Grimeton and the antenna system carried by six 127 meter high masts.

Ernst Alexanderson meets Bill Gates

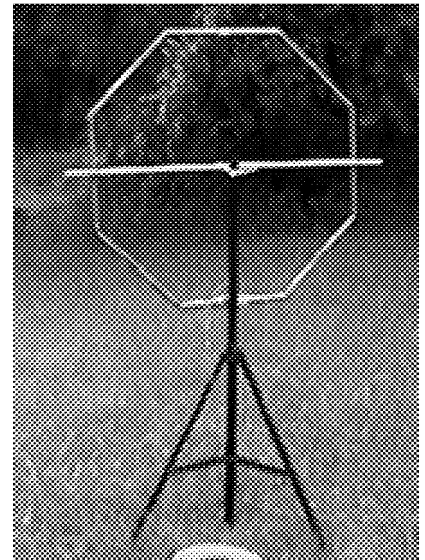
Using a cold-war era receiver backed up by late-twentieth-century computer technology, your new editor was able to copy the 17.2 KHz commemorative broadcast from the Alexanderson alternator at Grimeton Sweden on May 28th.

Radio station SAQ, the "great radio station" as it was called by the Swedes, was built during the years 1922-24 by RCA for transatlantic wireless telegraphy. The transmitter, the heart of which is an alternating-current generator (alternator), was developed by the Swedish-born engineer Ernst Alexanderson (1878-1975) who was a pioneer in radio engineering. Educated in Europe, and employed at General Electric in Schenectady, he later became chief engineer at Radio Corporation of America (RCA). Of the some twenty 200-kilowatt Alexanderson transmitters that were built in the USA by General Electric and installed all over the world, only this one at Grimeton remains

The SAQ transmitter is operated occasionally for special events. This time the Grimeton station was receiving an

Industrial Heritage Award from the Swedish government. As the Morse code message explained, "THE RADIO STATION AT GRIMETON HAS BEEN DECLARED A HISTORIC PROPERTY AND IS PROTECTED UNDER THE SWEDISH CULTURAL HERITAGE ACT".

Without the elaborate antenna farm used by RCA at their Riverhead, Long Island receiver site, hearing SAQ is a considerable undertaking. A shielded loop antenna and a Watkins Johnson 357 VLF receiver recently snagged at the Middletown hamfest helped a lot, but, even then, the signals were just barely perceptible. Modern technology came to the rescue. The receiver output was recorded on a lap-top computer via its sound card. The resulting ".WAV" file was processed by a spectral analysis program that made it possible to visually correlate the dots and dashes with the feeble sounds. The software package, Spectrogram Version 4.2.0 by R.S. Horne, is available as shareware on the Internet. It runs under Windows 95.



The 40-inch receiving antenna carried by Army surplus tripod at N3FRQ near Flemington, NJ

This month's meeting

The meeting will be held on Tuesday June 9th at 7:30 PM at the Telford Community Building on Hamlin Ave. in Telford. See page 9 for map.

This month's program will be a video, edited by Ted Sowirka and narrated by John Okolowicz, of Philco

commercials from the 1958 and 1959 Miss America Pageant. The newly introduced Predicta models are highlighted.

THE OSCILLATOR

Newsletter of the
Delaware Valley Historic Radio Club
Post Office Box 41031,
Philadelphia, PA 19127

The *Oscillator* is published monthly by members of the non-profit DVHRC. Its purpose is to provide a forum to educate, inform, entertain, and communicate with collectors and preservers of vintage radio technology.

We welcome and solicit information relating to radio history or collecting. Submissions should be carefully researched, typed and accompanied with clear photographs or diagrams. Material on-disc (3-1/2" DOS/Win95) is particularly welcome.

Unless copyrighted by the author, material in this publication is available for attributed reproduction for nonprofit purposes. (For convenience, the editor can supply copy on-disc.)

Personal views, opinions and technical advice offered in this newsletter do not necessarily reflect those of the members, officers or Board of Directors of the DVHRC, nor is the organization responsible for any buying or selling transaction incurred.

To join: DVHRC dues is \$10 per year. The membership year runs January-through-December. Please mail to the club PO box above.

Meetings are held monthly except July at 7:30 PM

DVHRC BOARD OF DIRECTORS

Dave Abramson Pete Grave Mike Koste
Bill Overbeck Ludwell Sibley

FOUNDING PRESIDENT

Jay Daveler

1998 DVHRC OFFICERS

President	Bill Overbeck	(610) 789-8199
Vice-President	Dave Abramson	(610) 827-9757
Treasurer	John Kern	(215) 538-2128
Secretary	Mike Koste	(215) 646-6488

OSCILLATOR EDITOR

Al Klase

OSCILLATOR CONTRIBUTORS

John Dilks, K2TQN	Alan Douglas
Alton DuBois, Jr	Mike Koste
Bob Thomas, W3NE	Ludwell Sibley
Ted Sowirka	

DVHRC TECHNICAL COMMITTEE

Jim Amici Ned Borger
Lewis Newhard Ted Sowirka

FLEA MARKET & AUCTION COMMITTEE

Pete Grave Dave Abramson

LIBRARIAN & TUBE PROGRAM

Charlie Class

MEMBERSHIPS

Mike Koste

ARTICLES & MEMBER ADS

may be sent to the editor at 22 Cherryville-Stanton Rd.,
Flemington, NJ 08822 (908) 782-4829

Fax: (908) 783-8361

E-mail: skywaves@bw.webex.net

The picnic is upon us!

The joint DVHRC - NJARC picnic and swap meet is being held Saturday June 20th at the Elks Lodge, Clinton Pa. Festivities begin at 9AM with breakfast (9 to 10), to be followed by tailgating, lunch (11:30 to 1PM), an auction, etc. The \$20 fee includes a tailgating space and food for one person. Family admission is \$30. Because of the food arrangements, **reservations are mandatory**. The deadline is June 17th. Contact Marv Beferman of NJARC, 2265 Emerald Park Dr., Forrked River, NJ 08731, phone: 609-693-9430.

TRAVEL DIRECTIONS: Route I-78/US 22 to exit 15. South on route 513 for 1/2 mile. Left on route 617 for 1.3 miles. Left into Elks Lodge.

Old Indian tricks

Ted Sowirka's excellent presentation on RCA VOM's and VTVM's at the May meeting dredged up several almost forgotten pearls of wisdom regarding instruments using D'Arsonval meter movements.

High-end instruments often had mirrored scales to eliminate parallax error when making readings. You position your eye so the needle covers up its reflection in the mirror. You can accomplish the same effect with a non-mirrored scale by arranging for the reflection of the center of your eye in the meter glass to fall directly over the needle.

Precision meters of the sort that are used lying face up on the table were routinely transported face down to preclude damage to the crucial rear bearing.

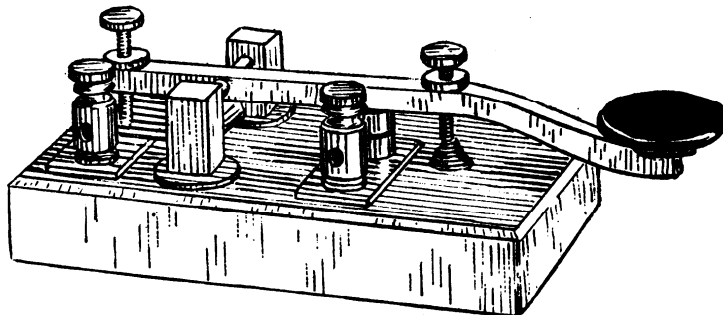
A fresh D cell can be used as a 1.56 volt reference for "shade tree" calibration purposes. (I think this needs to be a "plain" carbon-zinc cell, not the "alkaline" or "heavy-duty" variety. - Ed.)

When assembling an instrument it was standard practice to place a small blob of grease on the inside bottom of the case to catch loose debris before it found its way into the meter movement.

A drop of dish-washing liquid applied to a meter face will eliminate static buildup.

Coming Events

June 9	DVHRC Meeting, Telford Community Building
June 11-13	MAARC "Radioactivity", Laurel, MD
June 12	NJARC meeting, Freehold, NJ
June 20	DVHRC-NJARC Picnic



An introduction and an invitation

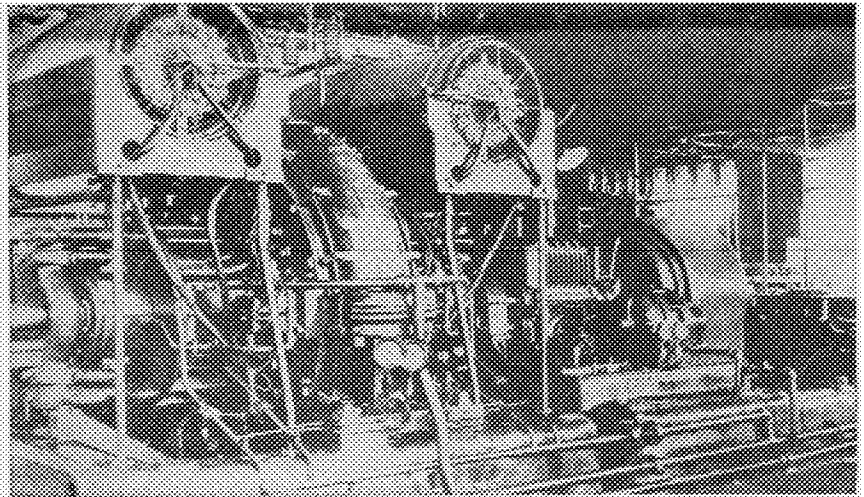
For those of you who haven't met me, my name is Al Klase. I live in Flemington, NJ, and have been interested in electronics in general, and radio in particular since the tender age of about four, when I got a look inside my Grandfather's 1930 McMillan TRF. I mostly collect and restore communications receivers, both civilian and military. I work as a Field Applications Engineer in the semiconductor industry, and did both analog and digital design work in a previous lifetime.

I am taking over as temporary editor of the Oscillator effective this issue. I'll do my best to live up to the high standards set by my predecessor, Lud Sibley. However, I'm going to need your help. Please submit material to the oscillator whenever you can. It doesn't have to be a polished complete article. Simple news items or announcements are very welcome as are comments and opinions in a "letter to the editor" format.

Computer technology is making it easier than ever to participate. Material can be submitted by E-mail and Fax as well as traditional "snail mail." Typed copy can be

scanned and processed by OCR (optical character recognition). I can also capture photographs on the scanner and dot screen them to enhance their reproducibility. Even material on video tape can be captured and used as still photographs. (See the loop antenna pic on page one.) Send your snapshots!

So, I'll do my part but you, as club members need to do yours. The Oscillator will only be as good as **we** make it.



200 KW Alexanderson high-frequency alternator installed in Naval Radio Station, New Brunswick, New Jersey, 1918.

MOLETTIERE AUCTION REPORT

Ludwell Sibley - with inputs from Ray Chase, Mike Koste, Pete Grave, et al.

Major news around these parts was the auction of much of Tony Molettiere's collection of radios and jukeboxes on May 7-9. Conducted by Gordon Riewe & Associates of Lapeer, Michigan, this three-day event had been billed as "The Big One." And it pretty much worked out that way, both in number of lots and in total sales. Radios totaled about \$70,000 (or two Rochesters); jukeboxes added up to about \$285,000.

It was really two sales, on different days and with different audiences: radios on Thursday-Friday, and jukeboxes on Saturday. Radios amounted to about 1000 lots, and jukeboxes another 350. The radios were basically '20s-'60s entertainment sets and audio gear; there was no "wireless," only one transmitter, and no tubes. The juke-box sale included a lot of fine nonelectronic collectibles like coin-op scales, two '50s-'60s cars, a merry-go-round horse, and even an amusement-park Mutoscope. It included rare jukebox brands like Aireon and RCA.

The auctioneer managed to compose a catalog for each sale. The catalogs were sketchy and incomplete, but, what with time pressure and the sheer size of the job, it was a major achievement to produce them at all. Sales approximately followed catalog order, although a lot of skipping-around was necessary because the goods could not be set out in strict

numeric order, and because some "hotter" items were timed for sale at 1:00 PM.

DVHRC members contributed greatly to the success of this operation, even though it was a commercial sale. On the radio days, Charlie Class moved goods with great endurance. The Grave Dynamic was in force, with Pete schlepping enthusiastically, assembling multiple lots on-the-fly, and calling out missing model numbers. Mike Koste appeared still able to focus his eyes after three days on his feet. The indefatigable Ray Chase redorded radio sales for publication.

The weather was not exactly cooperative, so use of a circus tent "saved the sale." Friday was worst, with a small river of runoff running across Tony's parking lot under the tent. And the same rain that wiped out AWA's Schooley's Mountain event on Saturday, although less severe, was present in Souderton. Audience size reflected the rain and the weekday scheduling of the radio sale, yet the tent was essentially full during the jukebox sale. Souderton's limited parking and street access turned out not to be a critical problem. Food catered by the Family Heritage Restaurant helped the spirits of the crowd.

The sale went reasonably smoothly despite the volume of goods and the need to bring them out of multiple buildings into limited space. A 5% buyer's premium, not announced in advance, was cancelled after, er, input from the buyers. An

admission fee of \$10 per day was imposed on grounds of restricting the audience to serious bidders; a discount (\$20 for three days) was essentially meaningless because few bidders were there for the whole sale. Auctioneer Riewe was generally unfamiliar with radios, yet well informed about jukeboxes and personable in dealing with the audience. The sale was plagued with a "ringman" shouting out "YUP . . . YEH" on spotting bids. (Auction firms defend this practice on grounds that it helps the auctioneer spot bids which might otherwise be missed; yet

invariably the auctioneer is in fine "sync" with the bidders independently of the ringman. This practice adds pressure and general sleaziness, making one wonder if the ringman's bidder really exists.) Buyers appeared from Canada, Texas, and points in between. A novel touch was use of a pair of huge TV monitors to sell the jukeboxes; used with a roving camera, this avoided the need to move the goods in front of the audience.

HIGHLIGHTS - RADIOS FROM MOLETTIERE AUCTION

Results recorded by Ray Chase

ADVERTISING

Advertising stand-ups (3).....	15
AK sign, "C. Proctor Radio Svc.".....	175
AK tin sign, repro.....	5
"Master Crafters" clock.....	40
"Old Drum Whiskey" clock.....	250
"Recording" sign, illuminated.....	23
"Westinghouse TV-Radio Service" and "RCA Picture Tubes" clocks.....	100
"RCA Victor" lighted sign.....	200
Statler Hotels framed sign "Radio in Every Room".....	20

AUDIO

Dynakit tuner, preamp., & amp.....	300
------------------------------------	-----

Fisher

"The President" tuner.....	25
40-watt receiver.....	130
100R tuner.....	25
Anniversary Series & 101R tuners.....	45
21R "Custom Electra" tuner.....	20
80C and 90C tuners.....	50
80C and 400C tuners.....	55
400CX tuner.....	375
500 and Futura tuners.....	25
500 stereo tuner.....	25
500B tuner.....	75
FM80 tuner.....	10
FM90X tuner.....	25
FM100B tuner.....	25
FM100C tuner.....	65
FM200B tuner.....	65
Reverb unit, NIB.....	50
Series 80 & Series 90 tuners.....	40
Series 80 tuner (2).....	10, 25
Hallicrafters S-107 tuner, dial glass broken.....	30
Heathkit AU30.....	13
MacIntosh receiver.....	200
MacIntosh tuner.....	90
Marantz 18 receiver.....	50
Meissner tuner.....	5
Sherwood tuner.....	23

COMM AND MILITARY GEAR

BC-603 tank rcvr, and unident SW tuner.....	25
CV-71/URR, CV-14/URR, and CV-57/URR TTY and diversity converters (all 3).....	55
Hallicrafters	
SX-25.....	65
S-36A.....	95
S-38.....	35
S-40A, wrong knobs.....	40
SX-62A, good.....	200
S-85.....	50
S-94 Civic Patrol (2), fair.....	20
S-95 and unident Halli.....	70
SX-101A.....	175
Hammarlund HQ-129X.....	70

National NC-125, good.....	105
T-22/ARC-5 xmtr.....	20

MISCELLANEOUS

Admiral 30A14 10" console TV set.....	40
Amperite "Professional" desk mike.....	100
Edison Dictaphone.....	20
Gray "Endurance" wet B-battery.....	45
Majestic Super B-eliminator.....	25
Motorola 7" table TV set, good.....	55
Radio cookie jar.....	30
RCA Victor wood UHF converter.....	10
Rickenbacker Electric PA system, early.....	75
Westinghouse fan.....	40

RADIOS

Admiral

6001 bakelite set.....	30
SW console radio-phonos, less knobs.....	20
Air Chief SW console, good.....	20

Airline

"Movie dial" console, poor.....	50
Large wood SW table set.....	75
SW farm table set.....	25
Airline SW wood table set, chromed chassis, nice.....	65

Atwater Kent

33 in Red Lion cabinet, w/ spkr.....	225
40.....	45
40 & spkr in Pooley cabinet, good.....	65
44 and E spkr.....	110
55, chassis only.....	45
55, table model, w/ spkr.....	210
60 in Kiel drop-front table.....	275
145, good.....	155
165 cathedral, good.....	325
286 console, VG.....	65

American Radio Associates coin-op sets (pair).....	70
Arvin 518A wood table set, less tubes.....	65
Arvin Hop-Along Cassidy set, VG.....	325
Asco metal coin-op set.....	25
Belmont wood SW tombstone, good.....	160
Bendix 526, dark green.....	500
Blaupunkt '50s SW console radio-phonos (3).....	40, 50, 110
Browning-Drake (National), parts missing, NT, and Fada Neutrodyne, w/ tubes.....	50
Champlain wood table radio-phonos.....	30
Clarodyne three-dialer, grille each side, NT.....	135
Columbia coin-op set.....	25
Coradio coin-op (pair); one NIB.....	55

Crosley

"Dashboard" plastic set, chartreuse.....	120
"Dashboard" plastic set, green.....	85
"Super 11" SW console, VG.....	175
E30MN plastic table set, brown.....	30

Delco

1107 tombstone, good.....	475
---------------------------	-----

R1231 bakelite, brown.....	35	40-190 SW console, good.....	75
32-V farm cathedral, mod. to 120 V, else VG.....	200	41-221 plus one unident. set.....	85
Console, fair, less knobs.....	10	41-296 SW console, good.....	70
Dynamotor for 32-V farm set.....	120	42-340 AM-FM-SW.....	35
DeWald small bakelite table set.....	65	42-1013 console.....	150
Echophone bakelite set.....	85	48-482 table set.....	25
Edison 7R 2-chassis console, nice.....	225	C801 console (conv. 1942 car radio).....	35
Electronic Corp. of Am. brown plastic set, good.....	50	Cathedral.....	100
Emerson		Chairside, good.....	100
520 brown & white (2).....	100, 100	Hi-boy console, tapestry grill, good.....	60
564, mustard color.....	1150	Junior cathedral, good.....	100
587A plastic table set, white, new.....	60	Oval chairside.....	50
AU190 orange-yellow.....	1550	Predicta table TV set.....	325
Erla cathedral w/ clock, good.....	325	R1116 console, fair.....	25
Espey 581 portable "morale set".....	35	Refrigerator set, VG.....	80
Fada		Roll-top portable, good.....	35
652, orange & red.....	700	"Transcontinental" table set.....	165
760, orange w/ white handle.....	1000	RCA Victor	
Battery set, fold-out loop, tubes, pot-metal diseased.....	80	6K2 SW console, poor.....	10
Farnsworth 10-tube SW console, good.....	60	6K3 SW console, poor.....	15
Federal B30 table set, w/ tubes.....	30	9K radio w/ "cobra" changer.....	375
Freshman battery set, NT.....	25	16X4 wood table set.....	20
General Electric		75X11 table set.....	40
A55 console, good.....	50	811K SW console (2).....	35, 50
H116 SW console, fair.....	10	45-RPM phonos (pair).....	45
L916 SW console, good.....	35	45-RPM portable phono.....	50
M61 cathedral, good.....	165	C6-2 console, good.....	40
Wood table set, poor.....	100	Cathedral.....	75
GM 110MM cathedral, VG.....	275	Floor coin-op set, nice.....	55
Grunow all-wave console, poor.....	40	K80 SW console, good.....	45
Grunow wood table set, chrome trim, VG.....	175	Metal coin-op set (3).....	25, 25, 25
Hallicrafters 500C, green, VG.....	100	R28P table set w/ sliding doors.....	175
Hallicrafters TW1000 (2).....	unspec. 55, good 175	R4 cathedral, good.....	300
Homebuilt two-dialer, 7 UV-199s (5 in audio!).....	175	Radiola 18.....	60
Howard wood table set, good.....	60	Radiola 18 and 101 spkr.....	50
Kameraphone, early portable phono.....	100	Radiola 33, built into console, w. spkr.....	10
Lafayette 2-speaker telephone-dial SW console.....	200	Radiola 60, VG.....	100
LaSalle cathedral, VG.....	110	Rekord Junior 196 and Goplana; '50s wood table sets.....	75
Lyric small console, good.....	45	Scott	
Lyric-Wurlitzer S65 cathedral.....	300	510 AM-FM console, blonde.....	160
Magictone bottle radio (2).....	w/ label, 310; no label, 150	All-Wave 12 console, some rust, less speaker.....	1700
Majestic		All-Wave 12, w/ amp. chassis, console cabinet, and paper, good chrome.....	825
90 dual-door high-boy console.....	45	FM Phantom Deluxe, VG.....	1750
130A console.....	30	radio-phono console.....	500
300 console, good.....	190	Silvertone	
Tombstone, large chrome-trimmed.....	320	6140 SW console.....	30
Mantola SW '30s table set, big dial.....	80	Stepped cathedral farm set.....	55
Mickey Mouse alarm-clock set (3).....	30	Wayfarer Trans-Oceanic-oid, good.....	125
Mickey Mouse clock radio, '50s.....	60	Sparton console, fair.....	25
Midwest 12 small console, VG.....	125	Sparton short-leg console.....	280
Modern plastic cathedral.....	5	Splitdorf RV695 battery set, tubes, VG.....	190
Nordmende ivory plastic.....	25	Steinite table set.....	35
Philco		Stewart-Warner	
"Bing Crosby" phono.....	15	"Fireside" radio, small plastic made as furniture.....	170
16L low-boy console, good.....	60	Drop-front table set, VG.....	175
18 low-boy console, good.....	85	Dual-door ornate low-boy console.....	100
38 cathedral, no spkr, fair.....	40	R1825 SW console, fair.....	25
39 cathedral, poor, no spkr.....	35	Stromberg-Carlson	
44 cathedral, good.....	200	260L 2-speaker SW console.....	150
60 cathedral (2).....	good, 95; VG, 175	Dual-door ornate console, good.....	350
70 grandfather clock radio, VG.....	600	"Thomas Edison" "repro" radio made as cylinder phono.....	100
86 high-boy, VG.....	135	Thordarson "All Star" console, poor.....	35
95 console, good.....	30	Tradio hotel coin-op set, nice.....	70
610 wood table set, food.....	104	Unident. coin-op sets (three).....	75
623 tombstone, poor.....	45	Unident. three-dialer, NT.....	40
37-84 cathedral (2).....	45, 75	Universal Publicizers mike radio, plastic.....	85
38-7 console, poor.....	35	Victor console, ornate, rust problem.....	60
38-8 SW console, good.....	95	Victor floor Victrola, good.....	200
38-61 cathedral table set, VG.....	170	Westinghouse	
38-690 SW console, roll front.....	750	Aeriola Sr. w/ 30 tube and headset.....	100
39-7 wood table set, good.....	45	H188 deco, black plastic.....	65
40-160 SW console, poor.....	15	Refrigerator set.....	90
40-170 console, good.....	50		

WR12 junior tower radio, good	110
WR12 SW table set	55
WR12 tower clock radio, good	280
WR8 tower clock radio, poor	130

Zenith

10S609 SW console, fair	65
5S228 tombstone, VG	180
6V27 black-dial tombstone farm set	375
Flip-up-dial portables (pair)	85
Low-boy console, early	50
Plastic radio-phono	130
Rolltop portable, fair	25
SW chairside, large half-round (not shutter) dial	475
SW Deco console, 7-tube, good	75
SW-police band console, black dial, '50s	50
Trans-Oceanics	
5H40	50
8G005	175
G500	180
L600, book	150
Leather-cased, good	150
Unident., less knobs	45
11-band 1968, VG	275
3000-1, 12-V PS, good	200

SPEAKERS

Horn (alone) for phono	50
------------------------------	----

No-name speaker, nice	50
RCA 100A speaker, good	30
RCA tapestry speaker, good (2)	65, 85
Thomas Talker speaker	15
Thompson horn speaker, open	120
Unident. horn speaker	70

TEST GEAR

AN/USM-44 (H-P 608) sig. gen in carry case, looks new	60
Heathkit audio analyzer	25
Hewlett-Packard 608, sig. gen., VG	55
Hickok	
209A large VTVM	70
534B tube tester	100
Countertop tube tester	110
KS-15750 L1 tube tester	90
Precision 10-15 "Tube Master" countertop tube tester	110
Tektronix 524 oscilloscope	25

TELEPHONES

"European," modern	10
A. E. 40 Deco	40
W. E. (?) steel wall set, AE dial	18
W. E. 20AL manual candlestick, "bulldog" xmtr	35
W. E. 20AL manual candlestick, brass	85

HIGHLIGHTS - JUKEBOXES AND GO-WITHS FROM MOLETTIERE AUCTION
Results recorded by Ludwell Sibley

Note: jukeboxes are designated as to record speed and number of selections: (78/12), (45/100), etc.

JUKEBOXES

General/Small Brands

"Junior Juke," short wall-mount hand-fed, 45/78 changer	75
"Orchestrope" '30s wood (78/20)	200
"Singing Towers," restored	4000
Automatic Instrument Co. deco wood	1500
Automatic Music Instrument Co. wood (78/20)	200
Bing Crosby "Junior Jukebox," wall-mount, single-play 2-tube, "Property of Bing Crosby Research Foundation"	150
Cadet CMM1 (45/100), glass cracked	350
Capehart 28F "Orchestrope," wood & beveled glass, 78 RPM, poss. incomplete	400
Cinematone 1¢ "Penny Phono," "Tune of the Week," restored	1500
Regina "Hexaphone" cylinder	4000
Packard Manhattan Playmore, restored	4750
RCA CE-29, bad veneer, less rear door	1050
Ristaucrat table-top, based on 45-RPM changer (2)	400, 400
United (UMC) "high fidelity" (45/100)	350
Williams "Music Mite," floor stand (45/10)	1600

Aireon

400 Ogive	700
500 ogive wood (78/24)	450
500 ogive, less coin mech. (78/24), w/ new plastics	200
Turreted wood-metal (78/24)	500
Unspec. deco (78/24)	200
Unspec. wood-metal (78/24)	750

AMI

"Mother of plastic," restored	3500
"Video-music center," 27" pic (45/200) stereo	400
Unspec. '40s (78/40)	1250
200	3100
Continental, stereo, w/ book (45/200)	2200
Continental II, 33/45 automix (2)	2050, 2250
Continental II, round	5000

D80	1500
D80 "Music for You by AMI"; solar-system motif (45/80)	600
E80 (45/160)	550
R81 stereo (45/200)	50
Sonoramic Sound	450
Unspec.	2100

Chicago Coins

"Bandbox," restored	3200
"Hit Parade," wall-mount (45/10)	1000

Evans

"Constellation," wood (78/40)	200
Dial-selected (45/10), glass cracked	100
"Jubilee" (45/40)	200

Mills

"Empress" (78/20)	1200
"Ferris Wheel," wood (78/12)	300
951 (78/40)	200

Rock-Ola

"Comet" (45/120)	900
"Grand Prix" GP160	500
"Hi-Fi" on pipe stand (45/120)	1000
"Hi-Fi" wall-mount (45/120)	550
"Hideaway" 78-RPM wood	250
"Silver Anniversary"	2300
"Starlet" (4)	100, 125, 150, 200
"Stereophonic 100"	2000
Type II (78/12), bad veneer	310
Unspec. '40s (78/20), veneer shot	200
120	3250
40 "Junior" (78/12)	1600
437	100
448 "Solid-State Integrated Circuit" (45/160)	150
460	100
474	100
490-1 (45/200)	450

1422 (78/20).....	1850
1428, domed wood.....	4250
1432.....	1250
1434.....	2750
1436 "Fireball" (45/120).....	300
1442 (45/50) w/ book.....	500
1454.....	1100
1455 (45/200).....	1500
1465 (45/100).....	650
1488 "Regis" (45/120).....	1300
Rowe	
T11 stereo (45/200).....	25
Rowe-AMI '60s mono (45/200).....	100
Rowe-AMI MM1 "Phono-Vue" w/ table remote video screen, w/ book.....	225
Rowe-AMI MM3 "Music Miracle" stereo (45/160).....	90
Seeburg	
"Discothèque" labeled "Penn State" (45/100).....	100
"Discothèque" PFEAIU "multichannel stereo".....	300
"Encore" background music system.....	50
"High Fidelity Hideaway" (45/100); loose innards.....	225
"Two-channel".....	1300
148M "Trash Can," uses carrier-current for commands from remote and for audio to remote spkr., w/ "Wallmatic" remote on floor stand and remote spkr in "organ-pipes" style, exc.	8000
201 Select-O-Matic (45/200).....	4500
AY100U w/ remote "now playing" sign.....	1000
DS160 "Directional Stereo" (33/160).....	500
FC1 stereo console (45/80).....	80
HF100G Select-O-Matic (45/100).....	1400
KD200 Select-O-Matic (45/200).....	2600
L100 Select-O-Matic (45/100).....	1850
LPC1 console (33/160).....	350
M100C, Select-O-Matic (45/100).....	1400
MSEL "Commander" (78/20).....	800
Q160 (33/160).....	800
Quadraphonic (33/160) (2).....	300, 350
S100.....	750
Select-O-Matic (45/100).....	2000
SS160 "Stereo Showcase," 33-1/3 albums, 160 plays.....	300
STD160.....	200
Symphonola "Casino" wood.....	200
Symphonola "Classic".....	200
Symphonola "Regal" (78/20).....	225
Symphonola (78/20) (2).....	150, 200
Unspec. table (78/12).....	1300
USC II (2).....	200, 250
Wurlitzer	
"Americana" (45/160).....	650
"Atlanta II" (45/160).....	100
"Colonial" "ship's wheel," wood, restored.....	5000
"Console" "High Fidelity," 45 RPM.....	1250
"Peacock," dome-top, lighted plastic, restored.....	15,000
"Victory," restored.....	7500
24.....	2700
71 countertop on repro base, restored.....	7000
750, dome-top, bubble-light, restored.....	8000
800, quasi-dome-top, lighted plastic, restored.....	6500
1015, dome-top, lighted plastic, restored.....	13,500
1050, domed.....	4000
1100.....	3500
1250 (78/48).....	800
1450 (78/48).....	700
1550.....	3000
1650AF.....	2000
1700F.....	2750
1800 (45).....	3500
1850.....	400
2000 (45).....	5000
2150 (45/200).....	900
2304 stereo (45/112).....	1200
2510 stereo (45/100).....	500
2610 stereo (33-45/120) signed "Treschler's Hotel".....	500
2700 stereo (45/200).....	300

2710 stereo (45/100).....	300
3100.....	200
3600 "Super Star".....	200
Tape-cassette, 10 sel.....	1300
Unspec. (45/200).....	400
Unspec. wood, "Multi-Selector" (78/16); less rear door.....	350

MISCELLANEOUS

"Test Your Skill" machine, Frantz Mfg. Co., ball-catcher, 10¢, table-mount.....	225
"Test Your Skill" machine, Frantz Mfg. Co., ball-catcher, 25¢, on base.....	325
Arnold malt mixer, single (2).....	120, 150
Bar stool, chromed seat ring, "RMC" logo.....	150
Barber chair.....	200
Barber pole, Wm. Marvy wall-mount.....	300
"Cartoon Paradise" kiddie theater.....	100
Cannons, brass, 1" bore on wheeled iron mount (2).....	95, 95
Car, 1952 Oldsmobile two-door, original two-tone paint, 35,000 miles.....	5500
Car, 1964 Chrysler four-door sedan.....	5000
Carousel horse, Loeff, carved wood, restored, "from Eldridge Park".....	3500
Cash register, NCR, brass, restored.....	1300
Cocktail shaker, '30s, board-mounted, reciproc. belt-drive.....	90
Coffee urn, copper, w/ sight glass, 2 gal.....	75
Crate lid, Rock-Ola "Luxury Light-Up" jukebox.....	25
Crate lid, Seeburg "Multi-Rayolite" rifle-range.....	30
Drive-in theater speakers, lot of 2.....	10
Figures, animated boy & girl, 24" quasi-Christmas, wks.....	50
Gas pump, "Good Gulf," restored, new glass, (reversibly) outfitted as fish tank.....	1000
Horseshoe game, Williams "Ringer".....	205
Lamp, bent leaded-glass, modern.....	85
Lamp, Tiffany-style leaded slag-glass.....	275
Lance cracker jar, square, 8" opening.....	65
License plates, Ice Dealer, NYC Dept. of Markets, '59 & '60.....	45
Mailbox, brass, apartment-size.....	5
Mutoscope, classic hand-cranked cast-iron card-flipper, "Behind the Scenes".....	2600
Parking meter, '40s.....	45
Pictures, domed juke-box, framed, pair.....	40
Planter's Peanuts jar, 6" opening, w/lid, decal figures.....	55
Planter's Peanuts jar, 8" opening, no lid, molded-in figures.....	55
Pool-table light, "Camel Cigarettes," '70s, 3 bulbs.....	95
Radio, modern, styled like domed jukebox.....	55
Radio, modern, styled like Seeburg juke-box remote.....	50
Radio, Thomas, styled like '60s jukebox.....	75
Railroad switch lanterns, oil, red-green (2).....	125, 125
Remote selection box (quasi-jukebox), Shyvers Multiphone (goes by phone line to manned central record-player site), 5¢.....	900
Rolls-Royce toy car, 12" convertible.....	30
Shooting gallery, "The Challenger" 10¢.....	350
Tic-Tac-Toe machine, Williams.....	125
Tops and other tin toys, boxlot.....	105
Traffic light, single 3-light, pipe-mount.....	100
Trinkets, juke-box (2nd shelf in display cabinet; cloissoné pins, etc.).....	350
Trinkets, juke-box (3rd shelf in display cabinet).....	230
Trinkets, juke-box (4th shelf in display cabinet).....	125
Trinkets, juke-box (5th shelf in display cabinet).....	265
Trinkets, juke-box (6th shelf in display cabinet).....	250
Trinkets, juke-box (residue from top shelf in display cabinet).....	175
Trinkets, juke-box (top shelf in display cabinet).....	135
Turnstile, Perey stainless steel.....	180

PINBALL MACHINES

"Live Power," battery-operated, deco wood.....	400
"Spanish Eyes" mechanical.....	300
Bally "Captain Fantastic" mechanical.....	475
Williams "Blackjack".....	150

REMOTE SPEAKERS

General/Small Brands

"A" and "Stereo" logos, green & white (2).....	95, 175
--	---------

Blue metal rounded, case only	50
Chromed star, 18" high.....	600
Countertop, plastic bowl-on-legs form. ca. 24" overall	450
For Packard Manhattan Playmore	3500
Free-standing, 5' high wood	200
Lot of seven wood	20
Rock-Ola wood (3)	45, 150, 250
Rowe-AMI cylindrical.....	30
Two (one wood, one plastic; cases only)	13
W/ dummy organ pipes, unident. (3)	100, 125, 175
Wood, unident. square	100

AMI

"Music by AMI," gray metal.....	325
Gray Zolotone	50
Large expanded-metal.....	45

Seeburg

"Symphonola".....	200
"Panoramic" column, blue	75
"High Fidelity," gray/chrome '60s.....	25
Teardrop, small gray, logoed "Seeburg"	200
Teardrop, one large, one small gray (2).....	250, 250
Blue-glass mirrored, 36" high ogive	800

Wurlitzer

"Stereo" floor-standing.....	200
"Strike Up the Band," wood, exc. or repro.....	800
Drum-style wood (2)	225, 400
Gray deco "tombstone" curved front	800
Half-round gray metal.....	45
Mirrored round wood	2250
Mirrored, 24" high.....	3000
Curved-front, small tan	450
Star pattern, exc. or repro.....	1900
Star pattern, multicolor plastic	900
Lighted plastic, 30" dia., repro	1300

REMOTE WALL/BAR BOXES

AMI

40 sel. (2)	65, 90
Curved front, bar legs	85
Curved front (5)	50, 55, 65, 75, 150

Keeney

24 selections	50
---------------------	----

Rock-Ola

Unspec. (5).....	10, 20, 25, 95, 225
------------------	---------------------

Seeburg

"100" (6)	150, 185, 225, 225, 250, 275
"160"	175
"200" (2)	175, 250
'60s	55
'70s	55
Square	130
Unspec. (6).....	50, 50, 85, 85, 85, 225
Square	130

Solotone

Unspec.	50
--------------	----

Wurlitzer

"Frogbox" (5)	100, 100, 125, 125, 200
"Frogbox", broken.....	40

24-selections (pair).....	400
Stereo spkr bar on stalk	225
Stereo spkrs built-in	175
Unspec. (3)	100, 105, 150
Unspec. (arched front).....	115

NEON SIGNS

"Bud Light," 3 colors, 24", wks.....	85
"Fabulous Fifties," 24", 4 colors, wks.....	260
"Miller High Life," 2 colors, wks	105
"Pabst Extra Light," 3 colors, wks.....	70
"Quality Service Since 1941," deco neon-outlined, wks.....	230
"Rock n' Roll," 2 colors, wks.....	175

SCALES

American, deco	175
Peerless 5¢ (4).....	95, 95, 135, 135
Rock-Ola 1¢	150
Toledo "Public Health," small deco.....	75
Unident. "Your Exact Weight," deco (2).....	75, 275
Unident. deco.....	95
Unident., gives character readings, 1¢	200
Watling 10¢, w/ mirror, "Your Weight & Horoscope"	125

SLOT MACHINES

"Golden Nugget" 10¢.....	1100
Base for "Golden Nugget," leaded-glass door, modern	175
Jennings "Club Chief" 5¢.....	1400
Mills "High Top," 10¢, "7-7-7 Special Award," said to be NOS.....	1700

VENDING MACHINES

"Delicious Chewing Gum," 2 coin slides, small, claimed NOS.....	75
"Fresh Gum," small wall-mount, 6 columns, 1¢	185
"Fresh Hot Nuts," triple, 10¢ (2).....	250, 300
"Fresh n' Hot Popcorn," Gold Medal, 5' high, 10¢.....	210
"Purenap" 5¢.....	20
"Super Scooper" crank-operated '60s.....	250
"Supercrane" '40s.....	650
7-Up, medium size, '60s, 25¢	125
Chocolate, wall-mount, 1 slide, 1¢.....	75
Cigarette, 5-1/2' high, '30s, 7 columns	400
Cigarette, Rowe wall-mounted deco, 7 columns, 10¢	425
Condom, lot of 3.....	10
Gumball, Columbus , 1¢.....	175
Gumball, Ford, twin pedestal-mounted.....	145
Movie-star cards, small 2-slot wood	215
Nuts, aluminum, w/ side cup dispenser, glass broken	70
Postage, '60s	35
Postage, Dillon Postmaster	85
Sports cards, 2¢.....	150
Sports cards, free-standing, 2-slide.....	65

WALL CLOCKS

Neon, floral design on face, ca. 30", Better Times modern.....	525
"Postal Telegraph," fair-good.....	65
"Wurlitzer Music" neon	1200
"Wurlitzer" neon, Better Times modern, wks	500



FIRST CLASS MAIL

**DVHRC
Box 41031
Philadelphia, PA 19127-0031**



**Yet another new meeting
place!**